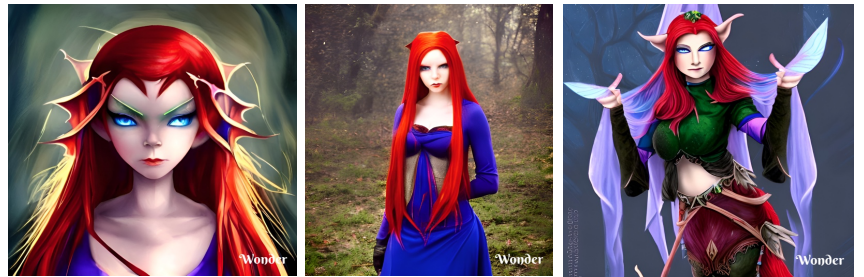


PATHFINDER

| TRAIT | DETAILS |
|-------------------|--------------------------|
| NAME | Ardeh Yllamaer |
| GENDER | Female |
| ANCESTRY | Elf |
| HERITAGE | Seer |
| BACKGROUND | Warrior |
| CLASS | Witch |
| Level | 5 |
| HIT POINTS | 6 |
| SPECIAL ABILITIES | Low Light Vision |
| SPECIAL ABILITIES | Detect magic cantrip |
| SPECIAL ABILITIES | +1 circumstance bonus |
| SPECIAL ABILITIES | Identify Magic |
| SPECIAL ABILITIES | Decipher Magical Writing |

| | |
|------|-------------|
| EYES | Blue/Violet |
| HAIR | Red |
| SIZE | Medium |
| SPD | 30 Feet |
| WT | |

CHARACTER AND OTHER IMAGES



| | |
|------------|--|
| CHARACTER | Cheerful, Curious, Avarice, Fate, Water Sign |
| ANNOYED BY | Frivolity |
| HOBBY | Drawing/Painting |

| Ability Score | Rolled | Ancestry | Class | Class Boost | Total Score | Modifier | Column1 | Notes |
|---------------|--------|----------|-------|-------------|-------------|----------|---------|-------|
| STRENGTH | 13 | 1 | | | 14 | 2 | | |
| DEXTERITY | 14 | 1 | 1 | | 16 | 2 | | |
| CONSTITUTION | 14 | -1 | | 1 | 14 | 2 | | |
| INTELLIGENCE | 16 | 1 | 1 | | 18 | 3 | | |
| WISDOM | 13 | | | 2 | 15 | 1 | | |
| CHARISMA | 15 | | | 1 | 16 | 2 | | |

| Type | Detail | Trained | Expert | Master | Ancestry | Initial Proficiencies | Acquired Proficiencies | Level | Notes |
|------------------|-----------------------|---------|--------|--------|----------|-----------------------|------------------------|-------|---|
| Background Feat | Intimidating Glare | | | | | | x | | |
| Background Skill | Intimidation | | | | | | x | | |
| Background Skill | Warfare Lore | | | | | | x | | |
| Background Skill | Perception | | | | | | x | | |
| Saving throws | Will | | | x | | | | | |
| Saving throws | Fortitude | | x | | | | | | |
| Saving throws | Reflex | | | x | | | | | Increase to "expert" at Level 5 |
| Skills | Arcana | | x | | | | | | |
| Skills | TBD | | | | | | | | |
| Skills | TBD | | | | | | | | |
| Skills | TBD | | | | | | | | |
| Skills | TBD | | | | | | | | |
| Skills | TBD | | | | | | | | |
| Attacks | club | | | x | | | | | |
| Attacks | crossbow | | | x | | | | | |
| Attacks | dagger | | | x | | | | | |
| Attacks | hvy crossbow | | | x | | | | | |
| Attacks | staff | | | x | | | | | |
| Defences | Unarmoured defence | | | x | | | | | |
| Perception | Perception | | | x | | | | | |
| Spells | Arcane Spell Attacks | | | x | | | | | |
| Spells | Arcane Spell DCs | | | x | | | | | |
| Proficiencies | Ancestry & Background | | | | | | x | | |
| Class Abilities | Arcane Spellcasting | | | | | | x | | Spell attack rolls and spell DCs based on INT modifier |
| Class Abilities | Heightening Spells | | | | | | x | | Use spell slots to Increase spell levels higher than 2 |
| Class Abilities | Heightening Cantrips | | | | | | x | | Cast at will, at level = current level/2 rounded up |
| Arcane School | Evocation | | | | | | | 5 | |
| Arcane Bond | Father's Longsword | | | | | | x | | "Longsword of Spectral Seers" |
| Arcane Bond | Drain Bonded item | | | | | | x | | Bind with a spell, use as a free action in combat |
| Arcane Thesis | Title of Work | | | | | | x | | "The Influence of Alchemical Biofeedback Mysteries as applied to Modern Military Enchanting and Illusions" |
| Arcane Thesis | Spell Blending | | | | | | x | | Trade any 2 open spell slots for bonus spell slot up to 2 levels higher for spells you can ordinarily cast. |
| Arcane Thesis | Cantrip Blending | | | | | | x | | Trade just 1 spell slot for 2 cantrips. |
| Skill Feats | 2nd level | | | | | | | | |
| Skill Feats | +2 levels | | | | | | | | |
| Wizard Feats | Counter Spell | | | | | | | 1 | |
| Wizard Feats | Bespell Weapon | | | | | | | 4 | |



| Type | Detail | Trained | Expert | Master | Ancestry | Initial Proficiencies | Acquired Proficiencies | Level | Notes |
|-----------------|--------------------------|---------|--------|--------|----------|-----------------------|------------------------|-------|---------------------------------|
| General Feats | 3rd level | | | | | | | | |
| Skill Increases | 3rd level | | | | | | | | 1 skill to be added or improved |
| Skill Increases | +2 levels | | | | | | | | 1 skill to be added or improved |
| Ancestry Feats | Elven Weapon Familiarity | | | | | | | | |
| Ancestry Feats | Elven Weapon Elegance | | | | | | | | |
| Ancestry Feats | TBD | | | | | | | | |
| SpellBook | Evocation Spell | | | | | | | 1 | |
| SpellBook | Force Bolt | | | | | | | | School spell? |
| Languages | Common | | | | | | | | |
| Languages | Elfish | | | | | | | | |
| Languages | Jotun | | | | | | | | |
| Languages | Dwarfen | | | | | | | | |
| Languages | Goblin | | | | | | | | |